



THE TOKYO CLUB

1-9-14 Roppongi, Minato-ku, Tokyo 106-0032

RECIPROCAL CLUB FACT SHEET

Name of Club:	The Tokyo Club
Address:	1-9-14 Roppongi, Minato-ku, Tokyo 106-0032 Japan
Telephone:	81-3-5114-0555
Fax:	81-3-5114-0600
Email:	tokyo-club@nifty.com
Website:	https://www.tokyoclub.or.jp
Location:	Centre of Tokyo (Close to government offices, and the American Embassy)

Established:	14th May, 1884
Chairman:	Mr. Tsuneharu Takeda
Secretary:	Mr. Timothy D. Minton
General Manager	Mr. Makoto Kishi
Number of Club Members:	641 (Gentlemen only)

GENERAL INFORMATION

- | | |
|--|--|
| 1) Days and hours of operation: | Monday through Saturday
10:00 am to 9:30 pm
(Closed on Sundays and National
Holidays) |
| 2) Dining service: | Luncheon 12:00 to 2:30 pm
Dinner 5:30 pm to 9:30 pm
Last order 8:30 pm |
| 3) Beverage service: | Main Bar (Men's Bar) and Lounge
11:00 am to 9:30 pm |
| ※ 20% surcharge will be applied to the final bill of dining and bar usage. | |
| 4) Bedroom accommodations: | <u>Not available</u> |

- 5) Restrictions:
- a) Members Resident in Japan may not use our Club.
 - b) Ladies Admitted to the Club from 11:00 am.
 - c) Children Those aged 17 years or older
- 6) Dress code: Jacket and tie required for men, and appropriate dress for ladies.
- Summer period 1 July – 30 Sep.: Ties and Jackets are optional throughout the Club House, except in the Bar, Dining Room and Private Rooms, where jackets are required.
- 7) Credit cards: AMEX, DINERS, VISA, Master Card DISCOVER

FACILITIES

- 1) Dining Room (French cuisine)
- 2) Private Dining Rooms (on request basis)
- 3) Bar and Lounge
- 4) Audio-Visual Room
- 5) Library
- 6) Games (Snookers, Cards, Igo, Shogi, Golf practice space) * Reservation required.
- 7) Relaxation Room
- 8) Shower Room
- 9) Car parking

SPECIAL NOTE FOR RECIPROCAL MEMBERS

Members of reciprocal clubs can use the Club facilities in the same way as members of the Tokyo Club by heeding the following provisions:

- 1. Present a letter of introduction from their own club to the Front Desk.
- 2. Report their address (contact) while in Japan to the Club Secretariat.
- 3. Settle all Club charges before leaving the Club premises.
- 4. Use of the Club premises for up to a maximum of 12 days per calendar year.
- 5. Lady members of reciprocal clubs, and ladies accompanied by members of such clubs may make use of the Club. They will however, be subject to the same restrictions applying to lady guests of the Tokyo Club members.

This information compiled as of 11th January, 2024.

Timothy D. Minton
Secretary

History of The Tokyo Club

In 1884, in line with Japan's newly introduced Westernisation policy and in accordance with The Meiji Emperor's proposal, The Tokyo Club was established by then Minister of Foreign Affairs, Kaoru Inouye, as a British-style gentlemen's club.



Portrait of Kaoru Inouye (by Frederick Harris)

The original purpose of The Tokyo Club was to promote international goodwill, along with friendship and the exchange of knowledge between Club members. This objective and the free spirit it embodies continue to guide the Club to the present day.

The Tokyo Club's founding members included many leading Japanese statesmen, bureaucrats, and financiers, as well as foreign dignitaries such as ambassadors and corporate representatives. During the Showa era, both pre- and post-WWII, the Club's membership continued to be drawn from leaders in various fields, a trend which still prevails to this day.

Over the Club's long history, many members of the Japanese Imperial family have fulfilled the role of Patron, with the position currently held by His Imperial Highness Prince Masahito Hitachi. The Club has a total membership of 600, comprising both Japanese and international members.

The Club House

The Club was originally established in the Rokumeikan guesthouse and used its facilities until 1897, when the first dedicated Club House was built in Uchisaiwaicho (now Shinbashi 1-chome, near Dobashi) with a grant from Emperor Meiji. Club life became ever more active, and in 1912 a new Club House was constructed in the Kojimachi Sannen-cho quarter (currently Kasumigaseki 3-chome).



Club House in Kasumigaseki 3-chome (formerly Kojimachi Sannen-cho)

That same red brick Club House in Kasumigaseki was used until 1960 (apart from during a temporary relocation due to damage during WWII). After the war, the Club took the opportunity to acquire the Kasumigaseki property and had the "Tokyo Club Building" constructed on the site, a contemporary office building which also housed the Club for the next 41 years.



Former Tokyo Club Building

In 2005, the Tokyo Club relocated to a modern purpose-built Club House in Roppongi 1-chome, and the Tokyo Club Building was reconstructed as a 14-storey office tower.



Tokyo Club Building



The Club House (Roppongi 1-chome)

Club Events and Activities

The Club arranges many events to promote international goodwill, cultural exchange and fellowship among its members. As well as regular Monthly Dinners, special celebrations are held with the presence of our Patron and foreign ambassadors to mark the Emperor's Birthday and important occasions in nations with which the Club has close links. In addition, some 50 cultural events are offered throughout the year, giving members and their guests the opportunity to attend lectures by leading figures in various fields, see productions of traditional Japanese performing arts and Western operas, and visit popular art exhibitions and other places of interest.



Celebrating the Emperor's birthday



A typical keynote address



Public Interest Activities

In line with the amendment of Japan's law governing non-profit and charitable organisations, in 2012, The Tokyo Club's legal status changed from that of Incorporated Association to General Incorporated Association, which has led to the Club placing all the more emphasis on public interest programmes.

The Club encourages international goodwill by promoting such public interest activities as academic exchange projects, awarding grants for selected cultural, scientific and artistic activities, and offering scholarships for academic studies and human resource development. Cultural activity grants are awarded for many suitable projects each year. Scholarships are also provided through appropriate institutions to Japanese students attending universities and graduate schools in the United Kingdom,

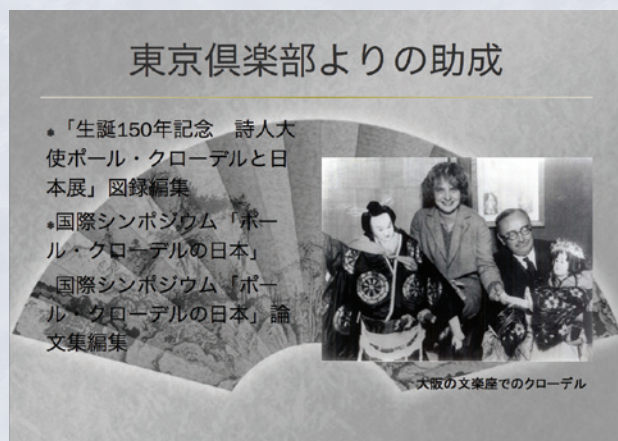
the United States and elsewhere, as well as to international exchange students coming to Japan. During the 50 years of the cultural activities and scholarships programme since 1958, the Club has provided funding for 1,200 projects. To foster academic exchange, each month a Lecture Luncheon is held for members and their guests, with presentations by prominent individuals from various fields. Furthermore, Club members with expertise in diplomatic and other fields organise regular opportunities for discussion and research meetings on current international affairs.



"Signs of the Intangible": an exhibition in Toronto to commemorate the 90th anniversary of the establishment of diplomatic relations between Canada and Japan, featuring photographs of Tenpyo sculptures and Gigaku masks at Todaiji temple, and bugaku masks and Noh performers at Kasuga Taisha Photo: Miro Ito



"Japan Orfeo": an opera performance at Tsurugaoka Hachiman Shrine in Kamakura to commemorate the 150th anniversary of the establishment of diplomatic relations between Italy and Japan



"Paul Claudel and Japan": part of an international symposium entitled "The Japan of Paul Claudel" to commemorate the 150th anniversary of ambassador-poet Paul Claudel's birth

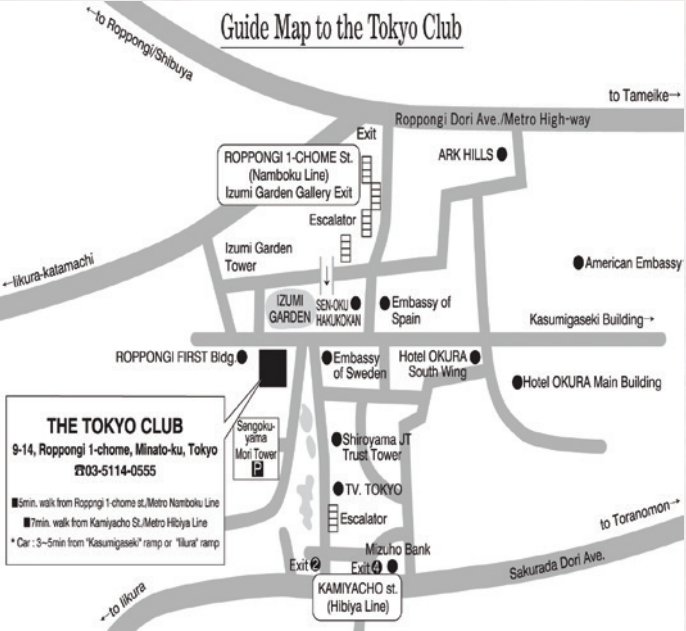


"Soshin / Denshin": a special Silk Road exhibition by Tokyo University of the Arts in which cloning techniques were used to reproduce lost items of cultural heritage © Tokyo University of the Arts



"Music Masters Course Japan 2018": last performance curtain call © T. Tairadate

Location of the Club House



www.tokyoclub.or.jp
Address: The Tokyo Club
1-9-14 Roppongi, Minato-ku, Tokyo 106-0032
Telephone: 03-5114-0555 Facsimile: 03-5114-0600

7-minute walk from Exit 4b of Kamiyacho Station on the Hibiya subway line
5-minute walk from Roppongi 1-chome Station on the Namboku subway line
3-5 minutes' drive from the Kasumigaseki or Iikura exits of the Tokyo Metropolitan Expressway

General Information

Opening hours: 10:00 - 22:00
Closed: Sundays, public holidays, and New Year holidays
Dress code: Jacket and tie

*The Club House is for the use of Club members, their accompanied guests, and members of reciprocal clubs. Discussion of commercial, political and religious matters should be avoided on the Club's premises.

The Club House and Facilities

The Club House is a four-storey building surrounded by greenery on a small hill in Roppongi 1-chome. Facing the Izumi Garden complex, and near the Spanish and Swedish Embassies, it is an urban oasis among the skyscrapers.

1F Lobby Area

The first floor comprises the reception lobby with a seating area for informal discussions, as well as the stylish British-themed Club Bar.



1st-floor Lobby

2F Dining Area

The second floor houses the main Dining Room and a comfortable lounge area, along with Western and Japanese private dining rooms.



2nd-floor Lounge



2nd-floor Private Room



2nd-floor Dining Room

3F Hall/Library

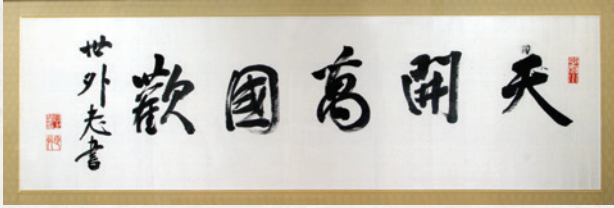
The third floor comprises a flexible hall space adaptable for various sizes of meetings, banquets, group dinners, Club celebrations and lectures. There is also a library for research activities.



3rd-floor Hall



3rd-floor Library



Calligraphy by Kaoru Inouye: Ten-wa-hiraku-bankoku-no-yorokobi
(Inscription: Segaishisho)

4F Games/Activities Floor

The fourth floor houses rooms dedicated to billiards, bridge, go and shogi as well as a computer room.

Reciprocal Clubs

Australia	Adelaide Club Commonwealth Club (Canberra) Athenaeum Club (Melbourne) Melbourne Club Australian Club, Sydney Union, University & Schools Club of Sydney
Austria	St. Johannis Club (Vienna)
Belgium	Cercle Royal Gaulois Artistique et Littéraire (Brussels)
Canada	Vancouver Club
Finland	Helsinki Finnish Club
France	Automobile Club de France (Paris) Cercle de l' Union Interalliée (Paris)
Germany	Industrie-Club (Dusseldorf) Übersee Club (Hamburg)
Hong Kong	Hong Kong Club
Italy	Circolo della Caccia (Rome) Società del Casino (Genoa) Società del Giardino (Milan)
New Zealand	Northern Club (Auckland) Wellington Club
Norway	Norske Selskab (Oslo)
Portugal	Gremio Literario (Lisbon)
Sweden	Sällskapet (Stockholm)
Switzerland	Club Baur au Lac (Zurich)
United Kingdom	City University Club (London) Oriental Club (London) Oxford & Cambridge Club (London) Savile Club (London) Travellers Club (London) New Club (Edinburgh)
United States	Metropolitan Club (New York) Metropolitan Club of the City of Washington

